



**Gyanmanjari<sup>®</sup>**  
Innovative University

**P**roficient **R**ational **E**loquent **M**otivational **I**nspired **U**niversity **M**embers

## Empowering Future Leaders with Skill-Based Education



**No long Theory Exam**



**Standard publisher book reference**



**30 Students per class**



**Experience Faculties**



**Skill Based Assessment**



**2 Hours session**

(No Gap between Theory & Practical)



**Min. One Industry Collaboration**



**Laptop compulsory**



**Unique Dress code**

## Program Highlights

**Portfolio Enhancement:** Build a strong portfolio with seminars, debates, and certificate courses.

**Real-World Application:** Prepare for success with skills tailored for the competitive job market.

**Comprehensive Curriculum:** From research papers to business development pitches, we cover it all.

**Skill Certifications & Workshops:** Gain certifications and attend workshops that add value to your resume.

**Leadership & Entrepreneurship Training:** Learn how to lead teams, think strategically, and take initiative in creating new opportunities.

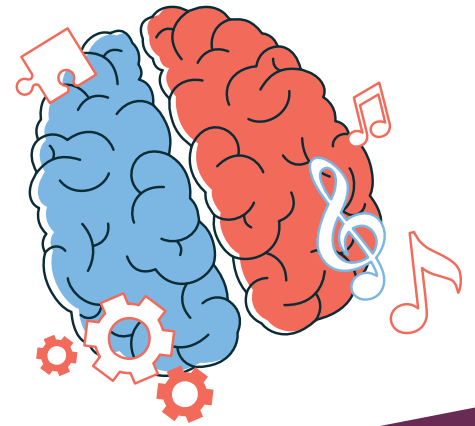


## Graduate Career-Ready

### Diverse Educational Opportunities :

<b>B.Tech-D2D</b>	: CSE With AI & ML
<b>DIPLOMA</b>	: Computer / IT
<b>BCA</b>	: BCA
<b>BBA</b>	: Innovation and Entrepreneurship
<b>B.sc.</b>	: Forensic Sci./Microbio. Hon. in Clinical Embrio/ Msc Clinical Embrio
<b>B.Com</b>	: Corporate Financial Management (CA Aligned Curriculum)
<b>B.A</b>	: Psychology

# Education is Important Beyond Academics



☎ 9099951160 / 7574949494

🌐 [www.gmiu.edu.in](http://www.gmiu.edu.in)